

RPX-CAMPUSWATCH CAMPUS SECURITY & CAR PARK MANAGEMENT

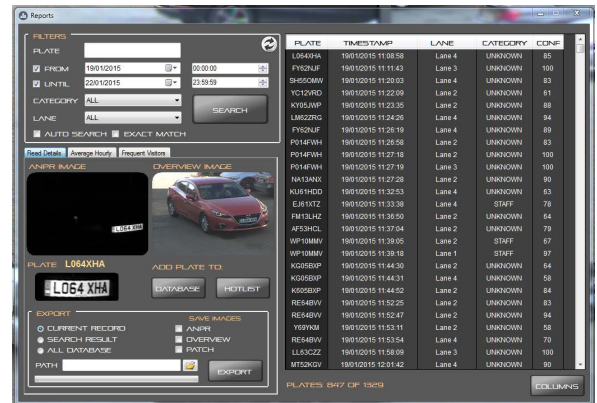


With multiple groups of users and limited spaces, school, college and university campus car parking facilities can often be open to abuse. Whether its staff and students parking where they shouldn't or visitors parking for longer than the designated time and going off site, an effective ANPR system will allow you to manage, monitor and protect your campus and parking facilities efficiently and effectively.



Benefits of an effective ANPR system

- Car park management and control of space squatters
- Virtual permit holder administration
- Automatic alerts for unwanted vehicles
- Management reports
- Reduced staff costs
- Identify overstays and infrequent users
- Increased security means a safer car park



RPX-LIVE: Interactive Vehicle Monitoring Application

Car Park Management

With a database made up of all staff and students (virtual permit holders) vehicle details as well as any pre-planned visitors, contractors etc. you can ensure a smooth experience for all users.

LED signs can be used to direct individuals or groups of people to specific parking areas. Visitors for example might be guided to the closest car park to reception, whereas students might be offered a tiered parking permit scheme with higher fees being charged for spaces closest to the main buildings and vice versa.

Unwanted Visitors

As well as managing the visitors you do want on your campus our ANPR systems can also alert you to unwanted or unauthorised visitors. Whether it's known criminals, banned vehicles or disgruntled employees - with the use of 'hot lists' you can flag any vehicle so they can be quickly identified as soon as they enter your campus creating a safer environment for all.

Real time alerts can be sent to security and parking staff enabling them to deal with situations proactively. Overview images can be taken of vehicles so as well as the number plate you have the make, model, colour and a view of the driver.

